

## STATISTICS UPDATE: CONSUMER PRICE INDEX

RELEASE DATE: 06th May, 2021,

### DECEMBER QUARTER 2020 HIGHLIGHTS

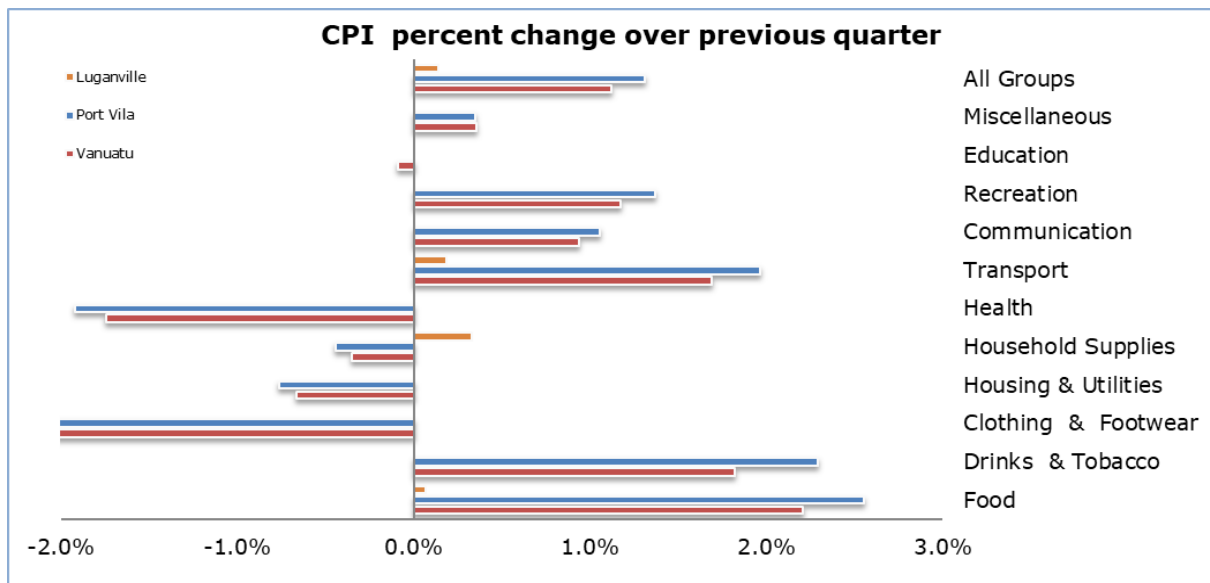


Figure 1: CPI per cent change over previous quarter

### CPI QUARTERLY MOVEMENT

The Consumer Price Index (CPI) of December 2020 indicated an increase of (+1.1%). Port Vila increased by (+1.3%), while Luganville slightly increased by (+0.1%) compared to the previous quarter. The expenditure groups that contributed to the increase in the CPI were: Food (+2.2%), Drinks & Tobacco (+1.8%), Transport (+1.7%) Recreation (+1.2%), Communication (+0.9%) and Miscellaneous (+0.4%). However, the group that contributed to the decrease in price movement were Clothing and Footwear (-3.3%), Health (-1.7%), Housing Utilities (-0.7%), and Household Supplies (-0.4%), On the other hand, Education remain constant. The increase in price movement was driven in Port Vila for price change in root crops, fruits and vegetables, Alcohols, Petroleum fuel, Visual entertainment equipment, internet usage fees, and other personal effects. Price changes in Luganville show no impact of price movement.

## CPI ANNUAL MOVEMENT

When compared to the December quarter of 2019, the Vanuatu index increased by (+6.2%), Port Vila index increased by (+7.5%) while Luganville index slightly decreased by (-1.5%). At national level, the expenditure groups that contributed to the increase over the same quarter of last year were: Food (+13.8%), Drinks and Tobacco (+4.4 %), Health (+3.8 %), Communication (+1.1%), Transportation (+0.8%), Recreation and Education stood at (+0.4%) respectively, and Miscellaneous (+0.2%). The increase in these expenditure groups were driven by the increase in price movements of Root crops, Fruits and Vegetables, Alcohol, prescription of medical drugs and mobile phones.

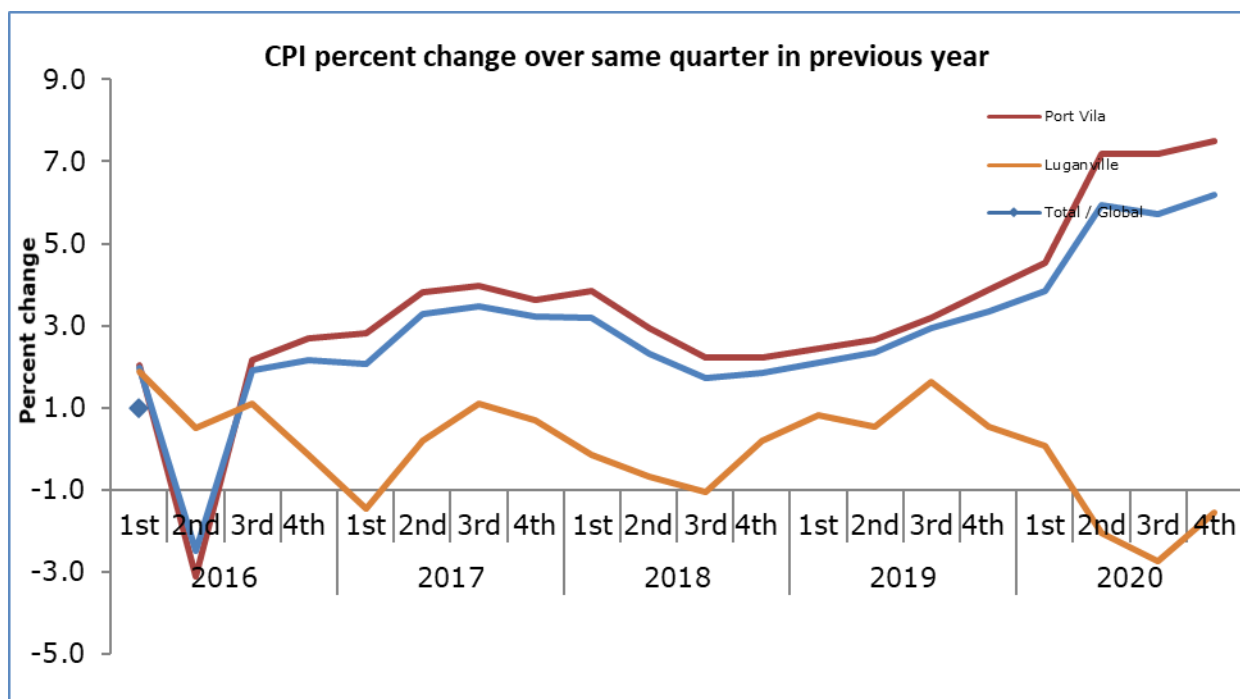


Figure 2: CPI per cent change over same quarter in previous year

## UNDERLYING INFLATION

'Underlying inflation' is a measure derived from the CPI excluding items which typically have unstable or volatile prices; because of things like seasonal variation or policy decisions. In September quarter of 2020, underlying inflation decreased by (-0.1%) over the previous quarter and decreased by (-1.0%) over the same quarter of 2019.

## CONCEPTS AND DEFINITIONS

The Consumer Price Index (CPI) is used to measure the changes in the prices of goods and services purchased by households in Port Vila and Luganville over a period of time. The separate indices for these two major commercial centres are then combined to create the Vanuatu CPI.

This change in prices is sometimes called inflation. Retail stores, supermarkets, liquor outlets, transport operators, service stations and other providers of goods and services help supply the Vanuatu National Statistics Office with the information to calculate the CPI. Prices are collected for exactly the same goods and services each quarter. This ensures that changes in the cost of goods and services over time are not due to changes in the quantity or quality of the goods and services purchased.

## ATTACHMENT

Table 1 Consumer Price Index: All Items

Table 2 Consumer Price Index: Expenditure Groups

NEXT UPDATE (QUARTERLY)

March

RELEASE DATE

6<sup>th</sup> of May, 2021.

## MORE INFORMATION

For statistical enquiries about this topic, please contact:

National Statistics Office: (678) 22110/22111/33040, Voip: 1124

Email: [stats@vanuatu.gov.vu](mailto:stats@vanuatu.gov.vu)

## PROVINCIAL STATISTICS OFFICES

### Sanma Office

PO Box 273, MFEM Building  
Luganville, SANTO  
Tel/Fax: (678) 36542  
Ext/voip: 6330

### Tafea Office

MFEM Building,  
Isangel, Tafea  
Tel: (678) 88014  
Ext/voip: 8361

### Malampa Office

MFEM Building  
Lakatoro, Malekula  
Tel: (678) 48400

Mr. Benuel LENGE

Government Statistician



**Table 1 Consumer Price Index** **Base: 1st Quarter 2000 = 100**  
**Tableau 1 Indice des prix à la consommation** **Base: 1<sup>er</sup> Trimestre 2000 = 100**

Consumer Price Indices					Underlying Inflation Index	Rate of Change (%)			Rate of Change (%)				
Year	Quarter	Indice des prix à la consommation			Inflation sous-jacente	Variation par rapport			Variation			Année	Trimestre
		Total / Global	Port Vila	Luganville	Total / Global	Total / Global	Port Vila	Luganville	Total / Global	Port Vila	Luganville		
						<b>Over Previous Year / à l'année précédente</b>			<b>4th Quarter over 4th Quarter of previous year / du 4ème trimestre au 4ème trimestre de l'année précédente</b>				
2016		146.7	147.2	144.5	133.1	0.9	0.9	0.8	2.2	2.8	-0.1	2016	
2017		151.2	152.6	144.7	133.3	3.1	3.7	0.1	3.3	3.8	0.7	2017	
2018		154.8	157.0	144.1	135.2	2.3	2.9	-0.4	1.9	2.3	0.2	2018	
2019		159.0	162.0	145.4	136.3	2.8	3.2	0.9	3.5	4.1	0.6	2019	
2020		167.5	172.7	143.1	135.8	5.3	6.6	-1.6	6.6	8.1	-1.5	2020	
						<b>Over Previous Quarter / au trimestre précédent</b>			<b>Over Same Quarter of previous year / au même trimestre de l'année précédente</b>				
2016	1st	145.7	145.7	145.9	133.3	0.8	0.6	1.8	2.0	2.0	1.9	2016	1er
	2nd	146.0	146.2	144.9	133.4	0.2	0.3	-0.7	-2.5	-3.1	0.5		2ème
	3rd	147.3	148.0	144.2	133.2	0.9	1.2	-0.5	1.9	2.2	1.1		3ème
	4th	147.8	148.9	143.1	132.5	0.3	0.6	-0.8	2.2	2.7	-0.1		4ème
2017	1st	148.8	149.9	143.8	132.3	0.7	0.7	0.5	2.1	2.8	-1.5	2017	1er
	2nd	150.8	152.0	145.2	133.4	1.3	1.4	1.0	3.3	3.8	0.2		2ème
	3rd	152.6	154.1	145.8	133.7	1.2	1.4	0.4	3.5	4.0	1.1		3ème
	4th	152.7	154.5	144.1	133.6	0.1	0.3	-1.2	3.2	3.6	0.7		4ème
2018	1st	153.7	155.9	143.6	134.8	0.7	0.9	-0.3	3.2	3.8	-0.1	2018	1er
	2nd	154.4	156.6	144.2	134.9	0.5	0.4	0.4	2.3	2.9	-0.7		2ème
	3rd	155.3	157.6	144.3	135.2	0.6	0.6	0.1	1.7	2.2	-1.0		3ème
	4th	155.6	158.0	144.4	135.9	0.2	0.3	0.1	1.9	2.2	0.2		4ème
2019	1st	157.0	159.8	144.8	136.3	0.9	1.1	0.3	2.1	2.4	0.8	2019	1er
	2nd	158.1	160.9	145.0	135.9	0.7	0.7	0.1	2.3	2.7	0.6		2ème
	3rd	160.0	162.8	146.7	136.5	1.2	1.2	1.2	2.9	3.2	1.6		3ème
	4th	161.0	164.4	145.2	136.6	0.6	1.0	-1.0	3.4	3.9	0.6		4ème
2020	1st	161.8	165.5	144.5	137.1	0.5	0.7	-0.5	3.0	4.5	-0.2	2020	1er
	2nd	166.9	172.2	141.9	135.3	3.1	3.9	-1.8	5.3	6.6	-2.2		2ème
	3rd	169.7	175.4	142.8	135.2	1.6	1.8	0.6	5.7	7.2	-2.7		3ème
	4th	171.6	177.7	143.0	135.4	1.1	1.3	0.1	6.2	7.5	-1.5		4ème

Table 2 Consumer Price Indices by Expenditure Group Tableau 2 Indice des prix à la consommation par poste de dépense													Base: 1st Quarter 2000 = 100 Base: 1 <sup>er</sup> Trimestre 2000 = 100				
Year	Quarter	Food Produits alimentaires	Alcoholic drinks and Tobacco Boisson alcoolisée et tabac	Clothing & Footwear Habillement	Housing & Utilities Loyer, eau, et énergie etc.	Household Supplies Mobilier et équipement ménager etc.	Health Santé	Transport	Communication	Recreation Loisir	Education	Miscellaneous Autres	All Groups Indice Global	Année	Trimestre		
<b>Vanuatu</b>														<b>Vanuatu</b>			
2015	1st	149.7	180.3	110.5	135.6	106.6	102.6	150.5	98.6	131.1	115.1	115.2	142.9	2015	1er		
	2nd	168.5	180.1	110.4	135.0	106.2	102.6	150.1	98.6	131.5	115.1	115.2	149.8		2ème		
2016	3rd	152.2	180.8	115.3	135.8	107.6	101.9	153.8	98.6	133.7	115.1	113.6	144.5	2016	3ème		
	4th	151.6	181.3	115.9	137.1	107.6	102.0	157.2	98.6	133.7	115.1	112.7	147.7		4ème		
	1st	155.1	180.9	114.3	133.2	107.6	101.8	158.3	99.0	133.7	120.5	112.6	145.7		1st		
	2nd	157.3	180.8	111.8	131.7	107.6	101.8	157.6	98.1	133.7	120.5	112.5	146.0		2ème		
2017	3rd	160.9	180.7	111.1	132.0	107.6	101.8	158.6	98.0	133.7	120.5	112.6	147.3	2017	3ème		
	4th	162.7	180.7	110.9	132.2	108.8	101.8	158.8	94.4	132.2	120.5	111.1	147.8		4ème		
	1st	164.9	181	110.4	130.9	108.0	101.9	162.5	94.9	132.7	124.3	110.0	148.8		1er		
	2nd	168.9	181	110.7	132.0	108.3	102.0	166.6	94.9	131.3	124.3	110.3	150.8		2ème		
2018	3rd	172.4	181.1	110.5	134.0	108.3	102.0	167.5	94.9	130.7	124.3	110.4	152.6	2018	3ème		
	4th	173.1	181	111.4	132.5	108.3	102.0	168.8	94.9	129.5	124.3	110.7	152.7		4ème		
	1st	174.5	186.1	112.0	134.1	112.7	103.2	169.7	95.2	135.5	110.5	112.2	153.7		1er		
	2nd	176.1	186.3	112.1	134.6	113.0	103.9	169.8	94.7	135.8	110.5	112.0	154.4		2ème		
2019	3rd	178.1	186.2	112.7	134.4	113.3	103.9	170.4	94.9	136.0	110.5	111.7	155.3	2019	3ème		
	4th	178.5	186.1	113.6	134.7	113.1	103.9	171.2	94.9	136.1	110.5	112.9	155.6		4ème		
	1st	181.1	187.3	112.8	136.2	113.4	103.2	173.2	95.2	136.4	110.9	114.7	157.0		1er		
	2nd	184.2	187.3	112.7	135.0	113.5	103.2	172.8	95.2	137.6	110.9	113.9	158.1		2ème		
2020	3rd	188.8	187.3	112.3	135.1	114.4	103.2	172.9	95.7	137.6	110.9	114.0	160.0	2020	3ème		
	4th	191.4	187.2	113.0	135.6	113.8	103.3	172.9	95.7	137.0	110.9	112.9	161.0		4ème		
	1st	193.3	188.3	113.4	135.6	114.1	103.6	172.9	95.9	136.2	111.3	111.8	161.8		1er		
	2nd	206.5	188.0	116.7	135.2	115.3	107.9	171.9	95.9	135.5	111.3	112.7	166.9		2ème		
2020	3rd	213.1	192.0	115.8	135.9	114.1	109.1	171.4	95.9	136.0	111.3	112.7	169.7	2020	3ème		
	4th	217.8	195.5	112.0	135.0	113.7	107.2	174.3	96.8	137.6	111.3	113.1	171.6		4ème		
	<b>Port Vila</b>														<b>Port Vila</b>		
	2015	1st	150.6	185.3	112.0	131.3	105.7	102.6	153.1	98.1	132.8	115.3	115.2		142.8	2015	1er
2nd		173.6	185.3	112.0	130.6	105.2	102.6	152.5	98.1	133.1	115.3	114.8	151.0	2ème			
3rd		153.8	186.0	118.0	131.8	107.7	101.8	157.0	98.1	135.6	115.3	114.3	144.8	3ème			
4th		152.9	186.4	118.4	132.9	108.0	101.9	160.7	98.1	135.7	115.3	113.8	145.0	4ème			
2016	1st	156.3	186.4	115.9	128.6	108.5	101.9	162.1	98.1	133.7	120.8	113.8	145.7	2016	1er		
	2nd	159.9	185.9	112.6	126.7	107.9	101.8	161.0	97.1	133.7	120.8	113.7	146.2		2ème		
	3rd	164.8	185.9	111.8	126.9	107.3	101.8	161.4	97.1	133.4	120.8	114.0	148.0		3ème		
	4th	167.7	185.9	111.6	127.1	107.4	101.8	162.0	93.2	133.4	120.8	112.7	148.9		4ème		
2017	1st	170.1	185.8	110.8	125.9	106.3	101.9	165.8	93.8	134.0	125.6	111.5	149.9	2017	1er		
	2nd	174.5	185.8	111.0	127.1	106.6	102.0	170.1	93.8	132.6	125.5	112.2	152.0		2ème		
	3rd	178.7	186.0	111.0	129.4	106.5	102.0	169.8	93.8	132.6	125.5	112.3	154.1		3ème		
	4th	180.6	186.0	111.7	127.6	106.6	102.0	171.3	93.8	131.2	125.5	112.7	154.5		4ème		
2018	1st	182.0	191.8	112.3	129.0	111.4	102.9	171.9	94.0	138.5	115.4	114.7	155.9	2018	1er		
	2nd	183.6	192.1	112.5	129.4	111.8	103.7	172.1	93.5	138.9	115.4	114.4	156.5		2ème		
	3rd	186.2	192.0	113.1	129.2	112.0	103.7	172.7	93.7	139.1	115.4	114.1	157.6		3ème		
	4th	186.7	192.0	113.6	129.9	111.7	103.7	173.5	93.7	139.1	115.4	115.1	158.0		4ème		
2019	1st	189.7	193.7	112.3	130.4	112.0	102.8	175.3	94.1	139.3	115.8	117.2	159.8	2019	1er		
	2nd	193.5	193.7	112.7	130.2	112.1	102.8	174.8	94.1	140.7	115.8	116.5	160.9		2ème		
	3rd	198.4	193.7	111.8	130.0	113.1	102.8	174.8	94.1	140.7	115.8	116.5	162.8		3ème		
	4th	202.7	193.7	112.8	130.8	112.4	102.8	174.8	94.7	139.9	115.6	115.6	164.4		4ème		
2020	1st	205.2	195.4	113.4	130.9	112.8	103.2	174.9	94.7	139.2	116.1	114.1	165.5	2020	1er		
	2nd	223.2	195.4	117.5	131.0	112.9	108.0	173.4	94.7	138.3	116.1	115.1	172.2		2ème		
	3rd	231.1	200.5	116.4	131.0	112.9	109.4	173.0	94.7	138.9	116.1	115.1	175.4		3ème		
	4th	237.0	205.1	111.7	130.0	112.4	107.3	176.4	95.7	140.8	116.1	115.5	177.7		4ème		
<b>Luganville</b>														<b>Luganville</b>			
2015	1st	147.7	156.5	105.1	160.7	112.0	103.2	136.3	101.3	121.5	114.4	115.6	143.2	2015	1er		
	2nd	150.0	155.7	104.4	161.0	111.6	102.6	137.5	101.5	122.5	114.4	116.7	144.2		2ème		
	3rd	147.4	156.3	105.1	159.0	114.2	102.7	136.6	101.5	128.9	114.4	108.9	142.6		3ème		
	4th	148.1	157.3	106.3	161.1	114.6	103.2	138.8	101.5	129.0	114.4	105.9	143.4		4ème		
2016	1st	151.8	155.9	108.2	160.5	117.7	101.6	137.8	103.9	126.7	119.2	105.0	145.9	2016	1er		
	2nd	148.3	156.9	109.0	162.5	117.7	101.6	139.4	103.9	126.7	119.2	105.0	144.9		2ème		
	3rd	146.9	156.4	108.9	163.4	116.8	101.6	139.9	103.2	127.0	119.2	103.4	144.2		3ème		
	4th	144.6	156.4	108.8	163.4	116.5	101.6	141.8	101.2	125.4	119.2	101.1	143.1		4ème		
2017	1st	145.8	157.8	109.2	161.8	117.6	101.7	145.4	101.2	125.0	119.7	100.1	143.8	2017	1er		
	2nd	148.5	157.8	110.0	162.0	118.0	102.1	147.8	101.2	124.2	119.7	98.6	145.2		2ème		
	3rd	149.2	157.9	109.4	162.0	118.5	102.6	155.6	102.2	120.0	119.7	98.2	145.8		3ème		
	4th	145.3	157.4	110.7	162.8	118.2	102.3	155.6	101.2	120.2	119.7	98.2	144.1		4ème		
2018	1st	146.8	160.1	111.1	166.1	119.8	105.3	158.1	102.1	118.6	93.0	96.6	143.6	2018	1er		
	2nd	146.1	160.0	111.2	166.2	119.5	105.3	158.2	102.1	118.4	93.0	96.7	144.2		2ème		
	3rd	147.9	159.6	111.4	166.7	120.7	105.7	158.5	102.1	118.4	93.0	96.2	144.3		3ème		
	4th	148.1	159.3	114.2	164.2	120.9	105.7	159.5	102.5	119.4	93.0	99.6	144.4		4ème		
2019	1st	148.7	158.8	114.9	164.4	121.2	106.5	162.1	102.1	120.2	94.0	98.8	144.8	2019	1er		
	2nd	149.2	158.6	114.2	164.5	121.8	106.5	162.6	102.1	120.2	94.0	97.4	145.1		2ème		
	3rd	152.8	158.4	114.5	165.0	121.7	106.5	162.6	102.1	120.2	94.0	98.2	146.7		3ème		
	4th	148.8	158.3	114.1	164.6	121.7	106.5	162.6	102.1	120.2	94.0	97.8	145.2		4ème		
2020	1st	148.3	157.4	114.0	164.4	121.2	106.6	162.7	103.4	119.4	94.0	97.6	144.5	2020	1er		
	2nd	142.4	156.3	114.0	160.0	129.4	106.8	164.0	103.4	119.4	93.7	97.6	141.9		2ème		
	3rd	144.3	156.1	114.0	165.9	120.9	106.8	163.2	103.4	119.4	93.7	97.6	142.8		3ème		
	4th	144.4	156.1	114.0	165.9	121.3	106.8	163.5	103.4	119.4	93.7	97.6	143.0		4ème		