



Vanuatu Bureau of Statistics  
Bureau des Statistiques du Vanuatu

## VANUATU BUREAU OF STATISTICS

Private Mail Bag 9019  
Ministry of Finance and Economic Management  
Port Vila, Vanuatu  
Ph: +678 33040/22110/22111  
E-mail: [stats@vanuatu.gov.vu](mailto:stats@vanuatu.gov.vu), Web: [www.vnso.gov.vu](http://www.vnso.gov.vu)



# STATISTICS UPDATE: CONSUMER PRICE INDEX

RELEASE DATE: 14<sup>th</sup> April 2023

## SEPTEMBER QUARTER 2022 HIGHLIGHTS

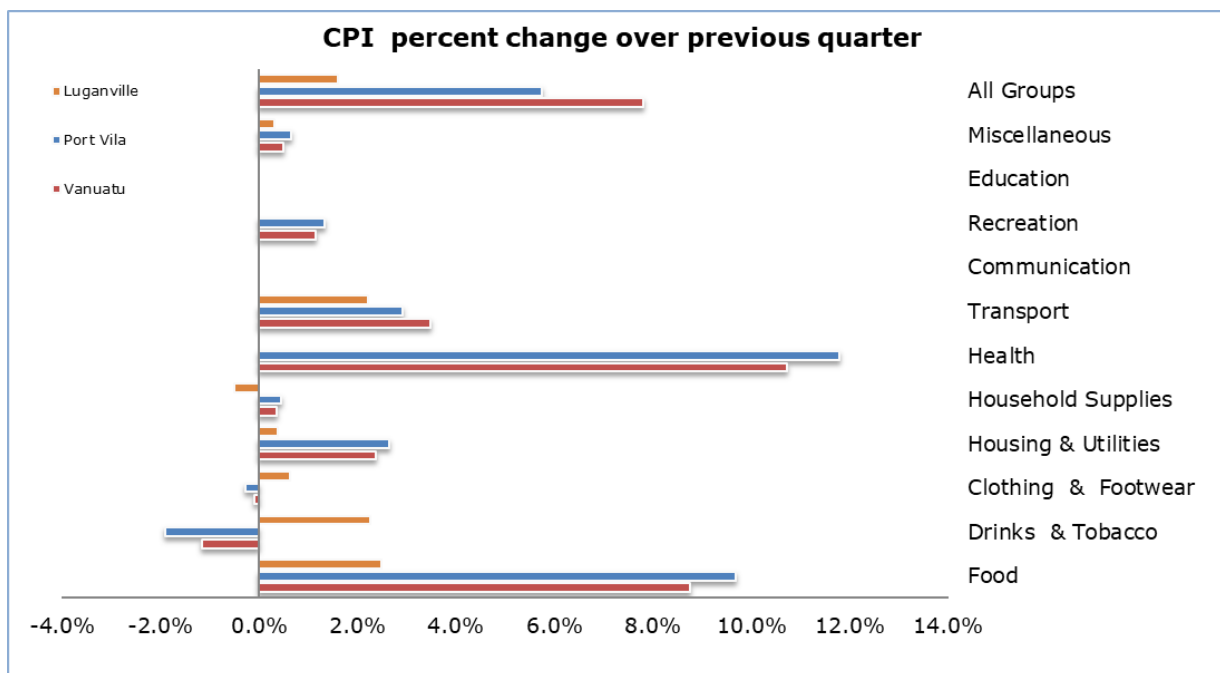


Figure 1: CPI per cent change over previous quarter

### CPI QUARTERLY MOVEMENT

The Consumer Price Index (CPI) of September 2022 indicated an increase of (+4.9%). Port Vila increased by (+5.4%) and Luganville by (+1.6%) compared to the previous quarter. The expenditure groups that contributed to the increase in the CPI were: Health (+10.7%), Food (+8.8%), Transport (+3.5%), Housing Utilities (+2.4%), Recreation (+1.2%), Miscellaneous (+0.5%) and, Household Supplies (+0.4%). Communication and Education remain constant. While the group that decreases in price were Drinks and Tobacco (-1.1%) and Clothing and Footwear (-0.1%). The increase in price movement was driven by price increase of medical prescription drugs, Fruits and Vegetables, Sea Transport, Petrol and Diesel, purchase of new motor vehicle and Electricity and water supply charges in both Port Vila and Luganville region.

## CPI ANNUAL MOVEMENT

When compared to the September quarter of 2021, the Vanuatu index increased by (+8.2%). Port Vila index increased by (+8.9%) and Luganville index increased by (+3.1%). At the national level, the expenditure groups that contributed to the increase over the same quarter of last year were: Food (+14.1%), Health (+11.6%), Miscellaneous (+5.2%), Drinks and Tobacco and Transport contributed (+5.1%) respectively, Housing Utilities (+5.0%), Education (+2.7%), Communication (+0.2%) and Household Supplies (+0.1%). The increase in these expenditure groups were driven by the increase in price movements of Root crops and Fruits and Vegetables, Medical Prescription drugs, Personal accessories (wallets and ladies' bag for Port Vila region), Tobacco , Petrol and diesel, sea fare( for both region), electricity , water and school fees.

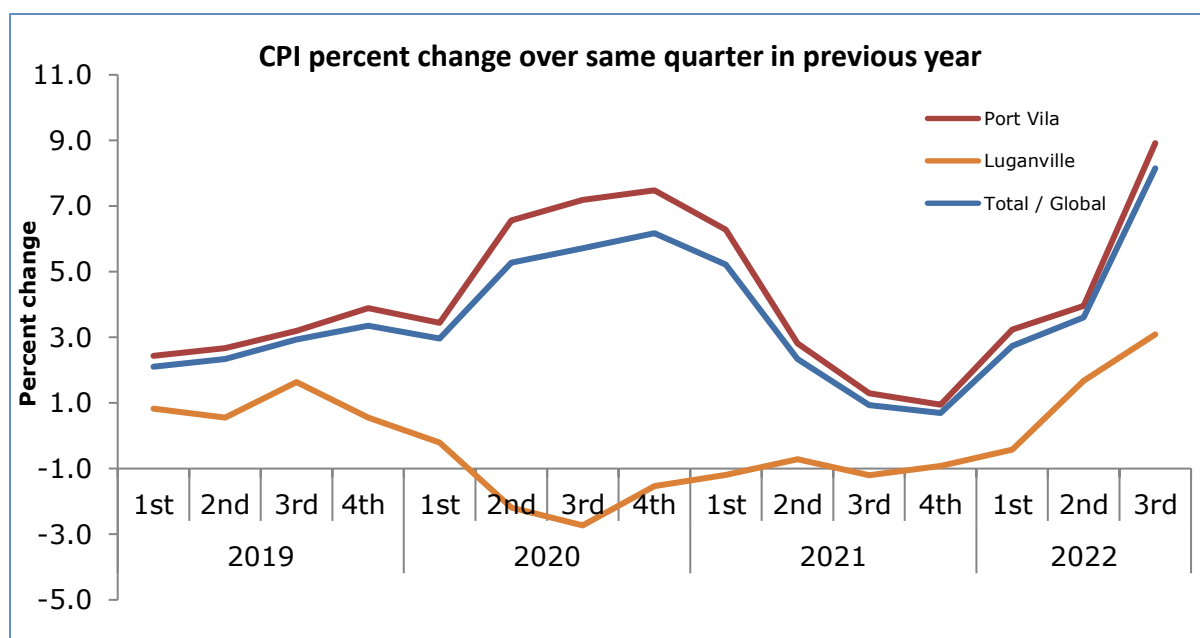


Figure 2: CPI per cent change over same quarter in previous year

'Underlying inflation' is a measure derived from the CPI excluding items which typically have unstable or volatile prices; because of things like seasonal variation or policy decisions. In September quarter of 2022, the underlying inflation increased by (+1.0%) over the previous quarter and increased by (+1.3%) over the same quarter of 2021.

## CONCEPTS AND DEFINITIONS

The Consumer Price Index (CPI) is used to measure the changes in the prices of goods and services purchased by households in Port Vila and Luganville over a period of time. The separate indices for these two major commercial centres are then combined to create the Vanuatu CPI.

This change in prices is sometimes called inflation. Retail stores, supermarkets, liquor outlets, transport operators, service stations and other providers of goods and services help supply the Vanuatu National Statistics Office with the information to calculate the CPI. Prices are collected for exactly the same goods and services each quarter. This ensures that changes in the cost of goods and services over time are not due to changes in the quantity or quality of the goods and services purchased.

## ATTACHMENT

Table 1 Consumer Price Index: All Items

Table 2 Consumer Price Index: Expenditure Groups

## MORE INFORMATION

For statistical enquiries about this topic, please contact:

National Statistics Office: (678) 33040, Voip: 1124

Email: [stats@vanuatu.gov.vu](mailto:stats@vanuatu.gov.vu)

## PROVINCIAL STATISTICS OFFICES

### Sanma Office

PO Box 273, MFEM Building  
Luganville, SANTO  
Tel/Fax: (678) 36542  
Ext/voip: 6330

### Tafea Office

MFEM Building,  
Isangel, Tafea  
Tel: (678) 88014  
Ext/voip: 8361

### Malampa Office

MFEM Building  
Lakatoro, Malekula  
Tel: (678) 48400



**Mr. Benuel Lenge**

**Chief Statistician**

<b>Table 1 Consumer Price Index</b>											<b>Base: 1st Quarter 2000 = 100</b>		
<b>Tableau 1 Indice des prix à la consommation</b>											<b>Base: 1<sup>er</sup> Trimestre 2000 = 100</b>		
Consumer Price Indices					Underlying Inflation Index	Rate of Change (%)			Rate of Change (%)			Année	Trimestre
Year	Quarter	Indice des prix à la consommation			Inflation sous-jacente	Variation par rapport			Variation				
		Total / Global	Port Vila	Luganville	Total / Global	Total / Global	Port Vila	Luganville	Total / Global	Port Vila	Luganville		
						<b>Over Previous Year / à l'année précédente</b>			<b>4th Quarter over 4th Quarter of previous year / du 4<sup>ème</sup> trimestre au 4<sup>ème</sup> trimestre de l'année précédente</b>				
2017		151.2	152.6	144.7	133.3	3.1	3.7	0.1	3.3	3.8	0.7	2017	
2018		154.8	157.0	144.1	135.2	2.3	2.9	-0.4	1.9	2.3	0.2	2018	
2019		159.0	162.0	145.4	136.3	2.8	3.2	0.9	3.5	4.1	0.6	2019	
2020		167.5	172.7	143.1	135.8	5.3	6.6	-1.6	6.6	8.1	-1.5	2020	
2021		171.4	177.7	141.6	134.4	2.3	2.9	-1.0	8.7	1.8	0.4	2021	
						<b>Over Previous Quarter / au trimestre précédent</b>			<b>Over Same Quarter of previous year / au même trimestre de l'année précédente</b>				
2019	1st	157.0	159.8	144.8	136.3	0.9	1.1	0.3	2.1	2.4	0.8	2019	1er
	2nd	158.1	160.9	145.0	135.9	0.7	0.7	0.1	2.3	2.7	0.6		2 <sup>ème</sup>
	3rd	160.0	162.8	146.7	136.5	1.2	1.2	1.2	2.9	3.2	1.6		3 <sup>ème</sup>
	4th	161.0	164.4	145.2	136.6	0.6	1.0	-1.0	3.4	3.9	0.6		4 <sup>ème</sup>
2020	1st	161.8	165.5	144.5	137.1	0.5	0.7	-0.5	3.0	3.4	-0.2	2020	1er
	2nd	166.9	172.2	141.9	135.3	3.1	3.9	-1.8	5.3	6.6	-2.2		2 <sup>ème</sup>
	3rd	169.7	175.4	142.8	135.2	1.6	1.8	0.6	5.7	7.2	-2.7		3 <sup>ème</sup>
	4th	171.6	177.7	143.0	135.4	1.1	1.3	0.1	6.2	7.5	-1.5		4 <sup>ème</sup>
2021	1st	170.7	176.6	142.8	134.8	-0.5	-0.6	-0.1	5.2	6.3	-1.2	2021	1er
	2nd	170.9	177.2	140.9	133.8	0.1	0.3	-1.3	2.3	2.8	-0.7		2 <sup>ème</sup>
	3rd	171.3	177.7	141.1	134.2	0.2	0.3	0.1	0.9	1.3	-1.2		3 <sup>ème</sup>
	4th	172.8	179.4	141.7	134.8	0.9	0.9	0.4	0.7	0.9	-0.9		4 <sup>ème</sup>
2022	1st	175.5	182.5	142.2	135.0	1.5	1.7	0.4	2.7	3.2	-0.4	2022	1 <sup>er</sup>
	2nd	177.3	184.5	143.3	134.5	1.0	1.1	0.8	3.6	4.0	1.7		2 <sup>ème</sup>
	3rd	186.5	195.1	145.6	135.9	4.9	5.4	1.6	8.2	8.9	3.1		3 <sup>ème</sup>

**Table 2 Consumer Price Indices by Expenditure Group**  
**Tableau 2 Indice des prix à la consommation par poste de dépense**

**Base: 1st Quarter 2000 = 100**  
**Base: 1<sup>er</sup> Trimestre 2000 = 100**

Year	Quarter	Food	Alcoholic drinks and Tobacco	Clothing & Footwear	Housing & Utilities	Household Supplies	Health	Transport	Communication	Recreation	Education	Miscellaneous	All Groups	Année	Trimestre
		Produits alimentaires	Boisson alcoolisée et tabac	Habillement	Loyer, eau, et énergie etc.	Mobilier et équipement ménager etc.	Santé			Loisir	Autres	Indice Global			
<b>Vanuatu</b>															
2019	1st	181.1	187.3	112.8	136.2	113.4	103.2	173.2	95.2	136.4	110.9	114.7	157.0	2019	1 <sup>er</sup>
	2nd	184.2	187.3	112.7	135.0	113.5	103.2	172.8	95.2	137.6	110.9	113.9	158.1		2 <sup>ème</sup>
	3rd	188.8	187.3	112.3	135.1	114.4	103.2	172.9	95.7	137.6	110.9	114.0	160.0		3 <sup>ème</sup>
	4th	191.4	187.2	113.0	135.6	113.8	103.3	172.9	95.7	137.0	110.9	112.9	161.0		4 <sup>ème</sup>
2020	1st	193.3	188.3	113.4	135.6	114.1	103.6	172.9	95.9	136.2	111.3	111.8	161.8	2020	1 <sup>er</sup>
	2nd	206.5	188.0	116.7	135.2	115.3	107.9	171.9	95.9	135.5	111.3	112.7	166.9		2 <sup>ème</sup>
	3rd	213.1	192.0	115.8	135.9	114.1	109.1	171.4	95.9	136.0	111.3	112.7	169.7		3 <sup>ème</sup>
	4th	217.8	195.5	112.0	135.0	113.7	107.2	174.3	96.8	137.6	111.3	113.1	171.6		4 <sup>ème</sup>
2021	1st	216.0	195.4	111.2	133.9	113.8	107.2	175.8	96.0	137.7	111.6	112.7	170.7	2021	1 <sup>er</sup>
	2nd	216.2	195.8	111.6	134.3	113.0	106.3	177.4	94.7	137.9	111.6	113.1	170.9		2 <sup>ème</sup>
	3rd	216.8	196.3	111.8	135.2	112.5	106.4	178.1	94.7	138.3	111.6	112.4	171.3		3 <sup>ème</sup>
	4th	220.2	197.4	110.8	135.1	113.0	105.8	178.6	94.8	136.8	111.6	116.6	172.8		4 <sup>ème</sup>
2022	1st	225.6	203.0	111.2	136.1	112.6	105.8	177.7	94.9	136.2	114.4	117.5	175.5	2022	1 <sup>er</sup>
	2nd	227.4	208.8	110.8	138.6	112.2	107.2	180.9	94.9	138.3	114.6	117.6	177.3		2 <sup>ème</sup>
	3rd	247.3	206.4	110.7	141.9	112.6	118.7	187.2	94.9	139.9	114.6	118.2	186.5		3 <sup>ème</sup>
<b>Port Vila</b>															
2019	1st	189.7	193.7	112.3	130.4	112.0	102.8	175.3	94.1	139.3	115.8	117.2	159.8	2019	1 <sup>er</sup>
	2nd	193.5	193.7	112.7	130.2	112.1	102.8	174.8	94.1	140.7	115.8	116.5	160.9		2 <sup>ème</sup>
	3rd	198.4	193.7	111.8	130.0	113.1	102.8	174.8	94.1	140.7	115.8	116.5	162.8		3 <sup>ème</sup>
	4th	202.7	193.7	112.8	130.8	112.4	102.8	174.8	94.7	139.9	115.6	115.6	164.4		4 <sup>ème</sup>
2020	1st	205.2	195.4	113.4	130.9	112.8	103.2	174.9	94.7	139.2	116.1	114.1	165.5	2020	1 <sup>er</sup>
	2nd	223.2	195.4	117.5	131.0	112.9	108.0	173.4	94.7	138.3	116.1	115.1	172.2		2 <sup>ème</sup>
	3rd	231.1	200.5	116.4	131.0	112.9	109.4	173.0	94.7	138.9	116.1	115.1	175.4		3 <sup>ème</sup>
	4th	237.0	205.1	111.7	130.0	112.4	107.3	176.4	95.7	140.8	116.1	115.5	177.7		4 <sup>ème</sup>
2021	1st	234.5	205.1	111.1	129.3	112.3	107.2	178	94.8	140.9	116.5	115.1	176.6	2021	1 <sup>er</sup>
	2nd	234.7	205.2	111.7	131.2	113.3	106.2	179.7	94.6	141.1	116.5	115.5	177.2		2 <sup>ème</sup>
	3rd	235.3	206.7	111.8	132.2	110.7	106.3	180.7	94.6	141.6	116.5	114.7	177.7		3 <sup>ème</sup>
	4th	239.3	208.1	110.9	131.8	111.3	105.6	182.0	94.6	139.8	116.5	119.7	179.4		4 <sup>ème</sup>
2022	1st	245.8	214.7	111.6	132.9	110.9	105.7	182.2	94.6	139.1	120.2	120.7	182.5	2022	1 <sup>er</sup>
	2nd	247.9	221.4	111	135.4	110.4	106.8	184.5	94.6	141.6	120.4	120.7	184.5		2 <sup>ème</sup>
	3rd	271.9	217.2	110.7	139	110.9	119.4	189.9	94.6	143.5	120.4	121.5	195.1		3 <sup>ème</sup>
<b>Luganville</b>															
2019	1st	148.7	158.8	114.9	164.4	121.2	106.5	162.1	102.1	120.2	94.0	98.8	144.8	2019	1 <sup>er</sup>
	2nd	149.2	158.6	114.2	164.5	121.8	106.5	162.6	102.1	120.2	94.0	97.4	145.1		2 <sup>ème</sup>
	3rd	152.8	158.4	114.5	165.0	121.7	106.5	162.6	102.1	120.2	94.0	98.2	146.7		3 <sup>ème</sup>
	4th	148.8	158.3	114.1	164.6	121.7	106.5	162.6	102.1	120.2	94.0	97.8	145.2		4 <sup>ème</sup>
2020	1st	148.3	157.4	114.0	164.4	121.2	106.6	162.7	103.4	119.4	94.0	97.6	144.5	2020	1 <sup>er</sup>
	2nd	142.4	156.3	114.0	160.0	129.4	106.8	164.0	103.4	119.4	93.7	97.6	141.9		2 <sup>ème</sup>
	3rd	144.3	156.1	114.0	165.9	120.9	106.8	163.2	103.4	119.4	93.7	97.6	142.8		3 <sup>ème</sup>
	4th	144.4	156.1	114.0	165.9	121.3	106.8	163.5	103.4	119.4	93.7	97.6	143.0		4 <sup>ème</sup>
2021	1st	145.2	155.6	111.8	162.0	122.2	106.8	164.5	103.3	119.4	93.7	97.6	142.8	2021	1 <sup>er</sup>
	2nd	145.2	157.0	111.8	150.7	122.7	106.8	165.4	94.9	119.4	93.7	97.6	140.9		2 <sup>ème</sup>
	3rd	146.1	154.2	112.2	150.7	123.4	106.8	164.7	94.9	119.4	93.7	97.6	141.1		3 <sup>ème</sup>
	4th	147.1	154.4	110.9	153.0	122.8	106.8	161.1	95.7	119.4	93.7	97.6	141.7		4 <sup>ème</sup>
2022	1st	148.0	156.1	110.1	153.3	122.9	106.8	159.3	96.5	119.4	93.7	97.6	142.2	2022	1 <sup>er</sup>
	2nd	149.2	158.6	110.6	154.8	122.9	110.1	162.2	96.5	119.4	93.7	97.6	143.3		2 <sup>ème</sup>
	3rd	152.9	162.2	111.3	155.4	122.3	110.1	165.8	96.5	119.4	93.7	97.9	145.6		3 <sup>ème</sup>