

STATISTICS UPDATE: CONSUMER PRICE INDEX

RELEASE DATE: 11 of February, 2021.

JUNE QUARTER 2020 HIGHLIGHTS

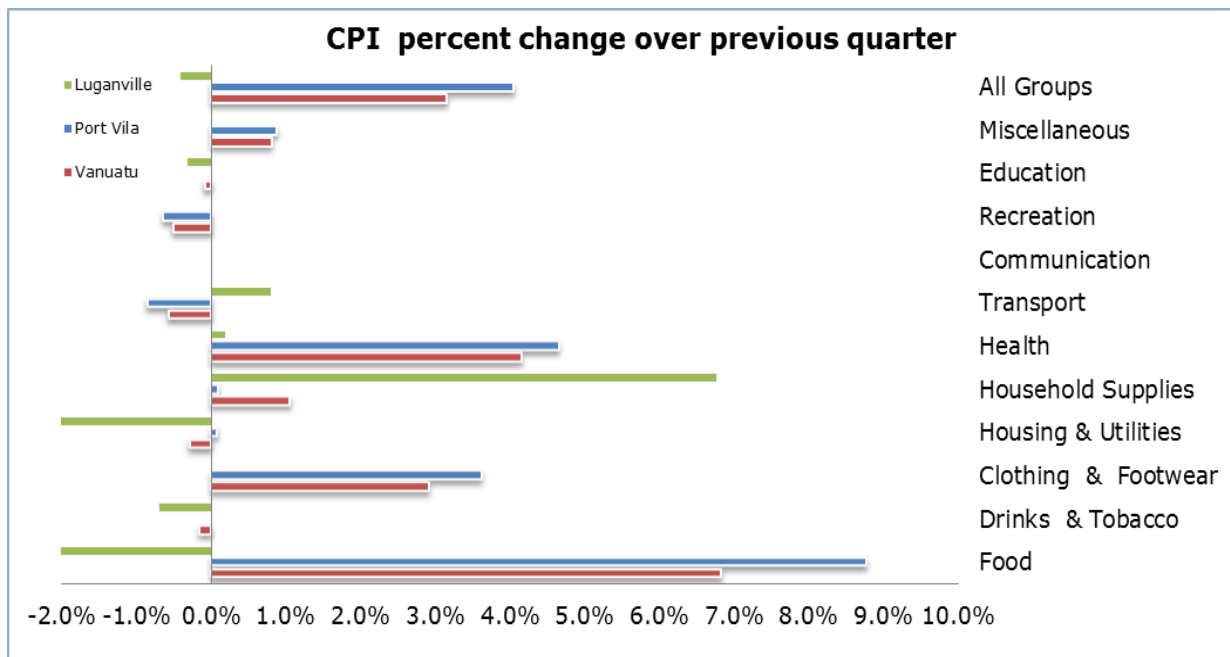


Figure 1: CPI per cent change over previous quarter

CPI QUARTERLY MOVEMENT

The Consumer Price Index (CPI) of June, 2020 indicated an increase of (+3.1%). Port Vila dramatically increased by (+3.9%), however, Luganville decreased by (-1.8%) compared to the previous quarter. The expenditure groups that contributed to the increase in the CPI were: Food (+6.8%), Health (+4.2%), Clothing and Footwear (+2.9%), Household Supplies (+1.1%), and Miscellaneous (+0.8%). However, the group that contributed to the decrease in price movement were Transportation (-0.6%), Recreation (-0.5%), Housing Utilities (-0.3%), Drinks and Tobacco (-0.2%). The increase in price movement were driven from price change for root crops, fruits and vegetables, medical prescribed drugs, men and woman's clothing, household furniture's, and other hair care products.

CPI ANNUAL MOVEMENT

When compared to the June quarter of 2019, the Vanuatu index increased by (+5.3%), Port Vila index increased by (+6.6%) while Luganville index slightly decreased by (-2.2%). At national level, the expenditure groups that contributed to the increase over the same quarter of last year were: Food (+12.1%), Health (+4.6), Clothing and Footwear contribute at (+3.5%), Household Supplies (+1.6%), Communication (+0.7%), Drinks and Tobacco (+0.4%), and Housing Utilities (+0.1%). The increase in these expenditure groups were driven by the increase in price movements of Root crops, Fruits and Vegetables, Men and Woman's shoes and clothing.

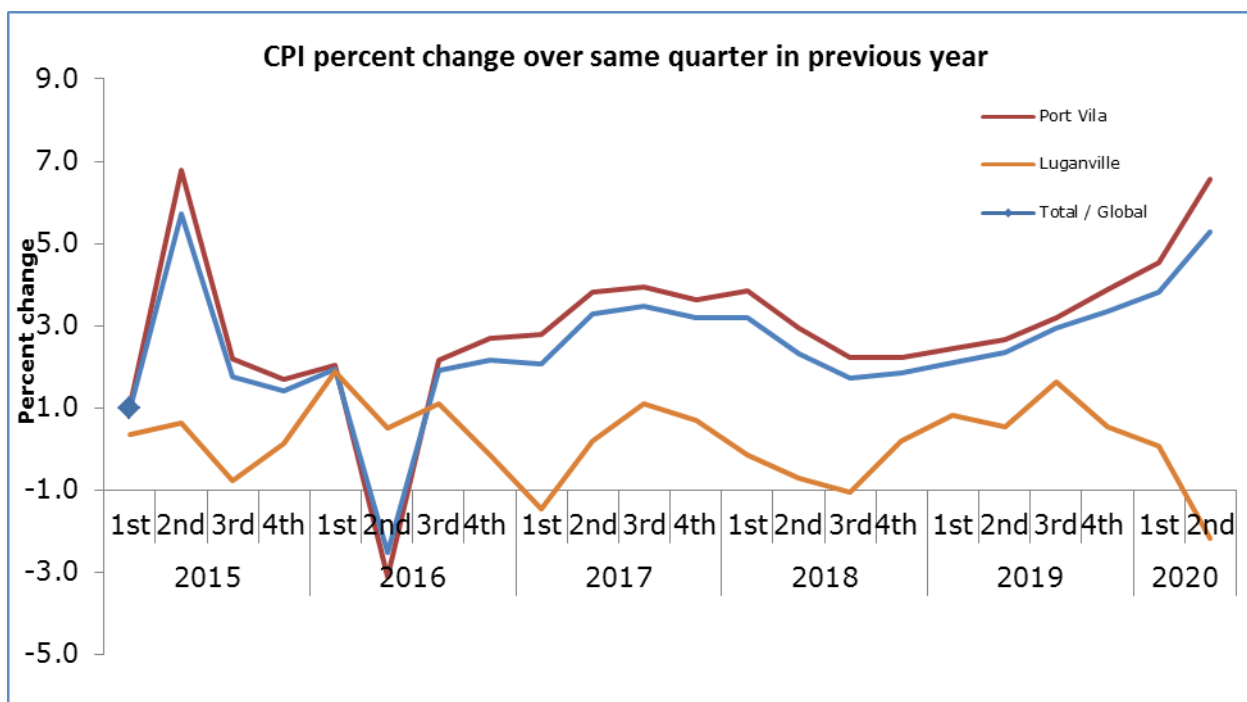


Figure 2: CPI per cent change over same quarter in previous year

UNDERLYING INFLATION

'Underlying inflation' is a measure derived from the CPI excluding items which typically have unstable or volatile prices; because of things like seasonal variation or policy decisions. In June quarter of 2020, underlying inflation decreased by (-1.3%) over the previous quarter and decreased by (-0.4%) over the same quarter of 2019.

CONCEPTS AND DEFINITIONS

The Consumer Price Index (CPI) is used to measure the changes in the prices of goods and services purchased by households in Port Vila and Luganville over a period of time. The separate indices for these two major commercial centres are then combined to create the Vanuatu CPI.

This change in prices is sometimes called inflation. Retail stores, supermarkets, liquor outlets, transport operators, service stations and other providers of goods and services help supply the Vanuatu National Statistics Office with the information to calculate the CPI. Prices are collected for exactly the same goods and services each quarter. This ensures that changes in the cost of goods and services over time are not due to changes in the quantity or quality of the goods and services purchased.

ATTACHMENT

Table 1 Consumer Price Index: All Items

Table 2 Consumer Price Index: Expenditure Groups

NEXT UPDATE (QUARTERLY)

RELEASE DATE

Sept

19th of March, 2021

MORE INFORMATION

For statistical enquiries about this topic, please contact:

National Statistics Office: (678) 22110/22111/33040, Voip: 1124

Email: stats@vanuatu.gov.vu

PROVINCIAL STATISTICS OFFICES

Sanma Office

PO Box 273, Millennium Building
Luganville, SANTO
Tel/Fax: (678) 36542
Ext/voip: 6330

Tafea Office

MFEM Building,
Isangel, Tafea
Tel: (678) 88014
Ext/voip: 8361

Malampa Office

MFEM Building
Lakatoro, Malekula
Tel: (678) 48400

Mr. KAP Calo Andy

Government Statistician

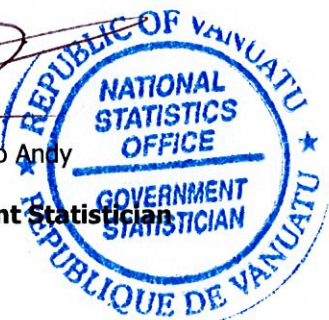


Table 1 Consumer Price Index

Base: 1st Quarter 2000 = 100

Tableau 1 Indice des prix à la consommation

Base: 1^{er} Trimestre 2000 = 100

Consumer Price Indices				Underlying Inflation Index	Rate of Change (%)			Rate of Change (%)			Année	Trimestre	
Year	Quarter	Indice des prix à la consommation		Inflation sous-jacente	Variation par rapport			Variation					
		Total / Global	Port Vila	Luganville	Total / Global	Total / Global	Port Vila	Luganville	Total / Global	Port Vila	Luganville		
					Over Previous Year / à l'année précédente			4th Quarter over 4th Quarter of previous year / du 4ème trimestre au 4ème trimestre de l'année précédente					
2015		145.5	145.9	143.3	131.9	2.5	2.9	0.1	1.4	1.7	0.1	2015	
2016		146.7	147.2	144.5	133.1	0.9	0.9	0.8	2.2	2.8	-0.1	2016	
2017		151.2	152.6	144.7	133.3	3.1	3.7	0.1	3.3	3.8	0.7	2017	
2018		154.8	157.0	144.1	135.2	2.3	2.9	-0.4	1.9	2.3	0.2	2018	
2019		161.6	165.2	144.7	136.3	4.4	5.2	0.4	7.3	9.0	-1.7	2019	
					Over Previous Quarter / au trimestre précédent			Over Same Quarter of previous year / au même trimestre de l'année précédente					
2015	1st	142.9	142.8	143.2	130.9	0.2	0.2	0.1	1.0	1.1	0.4	2015	1er
	2nd	149.8	151.0	144.2	132.8	4.8	5.7	0.7	5.7	6.8	0.6		2ème
	3rd	144.5	144.8	142.6	131.4	-3.5	-4.1	-1.1	1.8	2.2	-0.8		3ème
	4th	144.6	144.9	143.3	132.3	0.1	0.1	0.5	1.4	1.7	0.1		4ème
2016	1st	145.7	145.7	145.9	133.3	0.8	0.6	1.8	2.0	2.0	1.9	2016	1er
	2nd	146.0	146.2	144.9	133.4	0.2	0.3	-0.7	-2.5	-3.1	0.5		2ème
	3rd	147.3	148.0	144.2	133.2	0.9	1.2	-0.5	1.9	2.2	1.1		3ème
	4th	147.8	148.9	143.1	132.5	0.3	0.6	-0.8	2.2	2.7	-0.1		4ème
2017	1st	148.8	149.9	143.8	132.3	0.7	0.7	0.5	2.1	2.8	-1.5	2017	1er
	2nd	150.8	152.0	145.2	133.4	1.3	1.4	1.0	3.3	3.8	0.2		2ème
	3rd	152.6	154.1	145.8	133.7	1.2	1.4	0.4	3.5	4.0	1.1		3ème
	4th	152.7	154.5	144.1	133.6	0.1	0.3	-1.2	3.2	3.6	0.7		4ème
2018	1st	153.7	155.9	143.6	134.8	0.7	0.9	-0.3	3.2	3.8	-0.1	2018	1er
	2nd	154.4	156.6	144.2	134.9	0.5	0.4	0.4	2.3	2.9	-0.7		2ème
	3rd	155.3	157.6	144.3	135.2	0.6	0.6	0.1	1.7	2.2	-1.0		3ème
	4th	155.6	158.0	144.4	135.9	0.2	0.3	0.1	1.9	2.2	0.2		4ème
2019	1st	157.0	159.8	144.8	136.3	0.9	1.1	0.3	2.1	2.4	0.8	2019	1er
	2nd	158.1	160.9	145.0	135.9	0.7	0.7	0.1	2.3	2.7	0.6		2ème
	3rd	160.0	162.8	146.7	136.5	1.2	1.2	1.2	2.9	3.2	1.6		3ème
	4th	161.0	164.4	145.2	136.6	0.6	1.0	-1.0	3.4	3.9	0.6		4ème
2020	1st	161.8	165.5	144.5	137.1	1.1	1.6	-1.5	3.8	4.5	0.1	2020	1er
	2nd	166.9	172.2	141.9	135.3	3.1	3.9	-1.8	5.3	6.6	-2.2		2ème

Table 2 Consumer Price Indices by Expenditure Group
Tableau 2 Indice des prix à la consommation par poste de dépense

Base: 1st Quarter 2000 = 100
Base: 1^{er} Trimestre 2000 = 100

Year	Quarter	Food Produits alimentaires	Alcoholic drinks and Tobacco Boisson alcoolisée et tabac	Clothing & Footwear Habillement	Housing & Utilities Loyer, eau, et énergie etc.	Household Supplies Mobilier et équipement ménager etc.	Health Santé	Transport	Communication	Recreation Loisir	Education	Miscellaneous Autres	All Groups Indice Global	Année	Trimestre
Vanuatu															
2015	1st	149.7	180.3	110.5	135.6	106.6	102.6	150.5	98.6	131.1	115.1	115.2	142.9	2015	1 ^{er}
	2nd	168.5	180.1	110.4	135.0	106.2	102.6	150.1	98.6	131.5	115.1	115.2	149.8		2 ^{ème}
	3rd	152.2	180.8	115.3	135.8	107.6	101.9	153.8	98.6	133.7	115.1	113.6	144.5		3 ^{ème}
	4th	151.6	181.3	115.9	137.1	107.6	102.0	157.2	98.6	133.7	115.1	112.7	144.7		4 ^{ème}
2016	1st	155.1	180.9	114.3	133.2	107.6	101.8	158.3	99.0	133.7	120.5	112.6	145.7	2016	1 st
	2nd	157.3	180.8	111.8	131.7	107.6	101.8	157.6	98.1	133.7	120.5	112.5	146.0		2 ^{ème}
	3rd	160.9	180.7	111.1	132.0	107.6	101.8	158.6	98.0	133.7	120.5	112.6	147.3		3 ^{ème}
	4th	162.7	180.7	110.9	132.2	108.8	101.8	158.8	94.4	132.2	120.5	111.1	147.8		4 ^{ème}
2017	1st	164.9	181	110.4	130.9	108.0	101.9	162.5	94.9	132.7	124.3	110.0	148.8	2017	1 ^{er}
	2nd	168.9	181	110.7	132.0	108.3	102.0	166.6	94.9	131.3	124.3	110.3	150.8		2 ^{ème}
	3rd	172.4	181.1	110.5	134.0	108.3	102.0	167.5	94.9	130.7	124.3	110.4	152.6		3 ^{ème}
	4th	173.1	181	111.4	132.5	108.3	102.0	168.8	94.9	129.5	124.3	110.7	152.7		4 ^{ème}
2018	1st	174.5	186.1	112.0	134.1	112.7	103.2	169.7	95.2	135.5	110.5	112.2	153.7	2018	1 ^{er}
	2nd	176.1	186.3	112.1	134.6	113.0	103.9	169.8	94.7	135.8	110.5	112.0	154.4		2 ^{ème}
	3rd	178.1	186.2	112.7	134.4	113.3	103.9	170.4	94.9	136.0	110.5	111.7	155.3		3 ^{ème}
	4th	178.5	186.1	113.6	134.7	113.1	103.9	171.2	94.9	136.1	110.5	112.9	155.6		4 ^{ème}
2019	1st	181.1	187.3	112.8	136.2	113.4	103.2	173.2	95.2	136.4	110.9	114.7	157.0	2019	1 ^{er}
	2nd	184.2	187.3	112.7	135.0	113.5	103.2	172.8	95.2	137.6	110.9	113.9	158.1		2 ^{ème}
	3rd	188.8	187.3	112.3	135.1	114.4	103.2	172.9	95.7	137.6	110.9	114.0	160.0		3 ^{ème}
	4th	191.4	187.2	113.0	135.6	113.8	103.3	172.9	95.7	137.0	110.9	112.9	161.0		4 ^{ème}
2020	1st	193.3	188.3	113.4	135.6	114.1	103.6	172.9	95.9	136.2	111.3	111.8	161.8	2020	1 ^{er}
	2nd	206.5	188.0	116.7	135.2	115.3	107.9	171.9	95.9	135.5	111.3	112.7	166.9		2 ^{ème}
Port Vila															
2015	1st	150.6	185.3	112.0	131.3	105.7	102.6	153.1	98.1	132.8	115.3	115.2	142.8	2015	1 ^{er}
	2nd	173.6	185.3	112.0	130.6	105.2	102.6	152.5	98.1	133.1	115.3	114.8	151.0		2 ^{ème}
	3rd	153.8	186.0	118.0	131.8	107.7	101.8	157.0	98.1	135.6	115.3	114.3	144.8		3 ^{ème}
	4th	152.9	186.4	118.4	132.9	108.0	101.9	160.7	98.1	135.7	115.3	113.8	145.0		4 ^{ème}
2016	1st	156.3	186.4	115.9	128.6	108.5	101.9	162.1	98.1	133.7	120.8	113.8	145.7	2016	1 ^{er}
	2nd	159.9	185.9	112.6	126.7	107.9	101.8	161.0	97.1	133.7	120.8	113.7	146.2		2 ^{ème}
	3rd	164.8	185.9	111.8	126.9	107.3	101.8	161.4	97.1	133.4	120.8	114.0	148.0		3 ^{ème}
	4th	167.7	185.9	111.6	127.1	107.4	101.8	162.0	93.2	133.4	120.8	112.7	148.9		4 ^{ème}
2017	1st	170.1	185.8	110.8	125.9	106.3	101.9	165.8	93.8	134.0	125.6	111.5	149.9	2017	1 ^{er}
	2nd	174.5	185.8	111.0	127.1	106.6	102.0	170.1	93.8	132.6	125.5	112.2	152.0		2 ^{ème}
	3rd	178.7	186.0	111.0	129.4	106.5	102.0	169.8	93.8	132.6	125.5	112.3	154.1		3 ^{ème}
	4th	180.6	186.0	111.7	127.6	106.6	102.0	171.3	93.8	131.2	125.5	112.7	154.5		4 ^{ème}
2018	1st	182.0	191.8	112.3	129.0	111.4	102.9	171.9	94.0	138.5	115.4	114.7	155.9	2018	1 ^{er}
	2nd	183.6	192.1	112.5	129.4	111.8	103.7	172.1	93.5	138.9	115.4	114.4	156.5		2 ^{ème}
	3rd	186.2	192.0	113.1	129.2	112.0	103.7	172.7	93.7	139.1	115.4	114.1	157.6		3 ^{ème}
	4th	186.7	192.0	113.6	129.9	111.7	103.7	173.5	93.7	139.1	115.4	115.1	158.0		4 ^{ème}
2019	1st	189.7	193.7	112.3	130.4	112.0	102.8	175.3	94.1	139.3	115.8	117.2	159.8	2019	1 ^{er}
	2nd	193.5	193.7	112.7	130.2	112.1	102.8	174.8	94.1	140.7	115.8	116.5	160.9		2 ^{ème}
	3rd	198.4	193.7	111.8	130.0	113.1	102.8	174.8	94.1	140.7	115.8	116.5	162.8		3 ^{ème}
	4th	202.7	193.7	112.8	130.8	112.4	102.8	174.8	94.7	139.9	115.6	115.6	164.4		4 ^{ème}
2020	1st	205.2	195.4	113.4	130.9	112.8	103.2	174.9	94.7	139.2	116.1	114.1	165.5	2020	1 ^{er}
	2nd	223.2	195.4	117.5	131.0	112.9	108.0	173.4	94.7	138.3	116.1	115.1	172.2		2 ^{ème}
Luganville															
2015	1st	147.7	156.5	105.1	160.7	112.0	103.2	136.3	101.3	121.5	114.4	115.6	143.2	2015	1 ^{er}
	2nd	150.0	155.7	104.4	161.0	111.6	102.6	137.5	101.5	122.5	114.4	116.7	144.2		2 ^{ème}
	3rd	147.4	156.3	105.1	159.0	114.2	102.7	136.6	101.5	128.9	114.4	108.9	142.6		3 ^{ème}
	4th	148.1	157.3	106.3	161.1	114.6	103.2	138.8	101.5	129.0	114.4	105.9	143.4		4 ^{ème}
2016	1st	151.8	155.9	108.2	160.5	117.7	101.6	137.8	103.9	126.7	119.2	105.0	145.9	2016	1 ^{er}
	2nd	148.3	156.9	109.0	162.5	117.7	101.6	139.4	103.9	126.7	119.2	105.0	144.9		2 ^{ème}
	3rd	146.9	156.4	108.9	163.4	116.8	101.6	139.9	103.2	127.0	119.2	103.4	144.2		3 ^{ème}
	4th	144.6	156.4	108.8	163.4	116.5	101.6	141.8	101.2	125.4	119.2	101.1	143.1		4 ^{ème}
2017	1st	145.8	157.8	109.2	161.8	117.6	101.7	145.4	101.2	125.0	119.7	100.1	143.8	2017	1 ^{er}
	2nd	148.5	157.8	110.0	162.0	118.0	102.1	147.8	101.2	124.2	119.7	98.6	145.2		2 ^{ème}
	3rd	149.2	157.9	109.4	162.0	118.5	102.6	155.6	102.2	120.0	119.7	98.2	145.8		3 ^{ème}
	4th	145.3	157.4	110.7	162.8	118.2	102.3	155.6	101.2	120.2	119.7	98.2	144.1		4 ^{ème}
2018	1st	146.8	160.1	111.1	166.1	119.8	105.3	158.1	102.1	118.6	93.0	96.6	143.6	2018	1 ^{er}
	2nd	146.1	160.0	111.2	166.2	119.5	105.3	158.2	102.1	118.4	93.0	96.7	144.2		2 ^{ème}
	3rd	147.9	159.6	111.4	166.7	120.7	105.7	158.5	102.1	118.4	93.0	96.2	144.3		3 ^{ème}
	4th	148.1	159.3	114.2	164.2	120.9	105.7	159.5	102.5	119.4	93.0	99.6	144.4		4 ^{ème}
2019	1st	148.7	158.8	114.9	164.4	121.2	106.5	162.1	102.1	120.2	94.0	98.8	144.8	2019	1 ^{er}
	2nd	149.2	158.6	114.2	164.5	121.8	106.5	162.6	102.1	120.2	94.0	97.4	145.1		2 ^{ème}
	3rd	152.8	158.4	114.5	165.0	121.7	106.5	162.6	102.1	120.2	94.0	98.2	146.7		3 ^{ème}
	4th	148.8	158.3	114.1	164.6	121.7	106.5	162.6	102.1	120.2	94.0	97.8	145.2		4 ^{ème}
2020	1st	148.3	157.4	114.0	164.4	121.2	106.6	162.7	103.4	119.4	94.0	97.6	144.5	2020	1 ^{er}
	2nd	142.4	156.3	114.0	160.0	129.4	106.8	164.0	103.4	119.4	93.7	97.6	141.9		2 ^{ème}